

Mto'Bilan-GB

Getting started manual

To start the software :

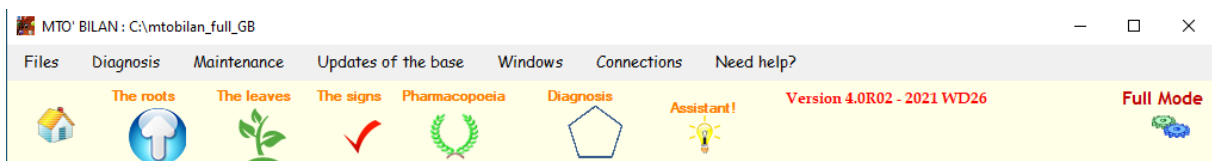


Clicking on the icon on your Windows desktop takes you to the Mto'Bilan software home page.

Just click on the central image to go to the next step. A window will then appear allowing you to use the software with ease.



The menu bar and the main icons :

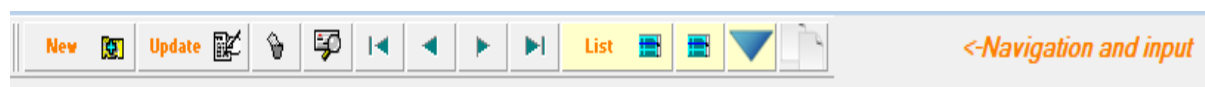


The menu bar located at the top allows you to manage or create, via the drop-down menu and / or via the icons:

- Roots
- Leaves and Signs
- The Pharmacopoeia
- Functional reports
- Maintenance (backups), imports (Database updates) and Parameters.

The navigation bar common to all files

For each file, a navigation bar allows consultation (search, reading) and the creation, modification or deletion of a file:



: entering a new file



: modification of the current file (you must click on this button to be able to modify the items!)



: effective recording of the current entry or modification



: abandonment of the current entry or modification



: deletion of the current record (confirmation is requested)



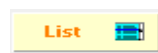
: search for a file after entering the code (or identifier) or its beginning.



: first, previous, next or last record



: duplication of the current record



: display of files in list mode. Each column can be sorted (click on the column) and can be searched (the little magnifying glass) and other operations (right click) .

Tooltips

When you hover over a button with the mouse, a tooltip appears to indicate the role of the button in question, examples:

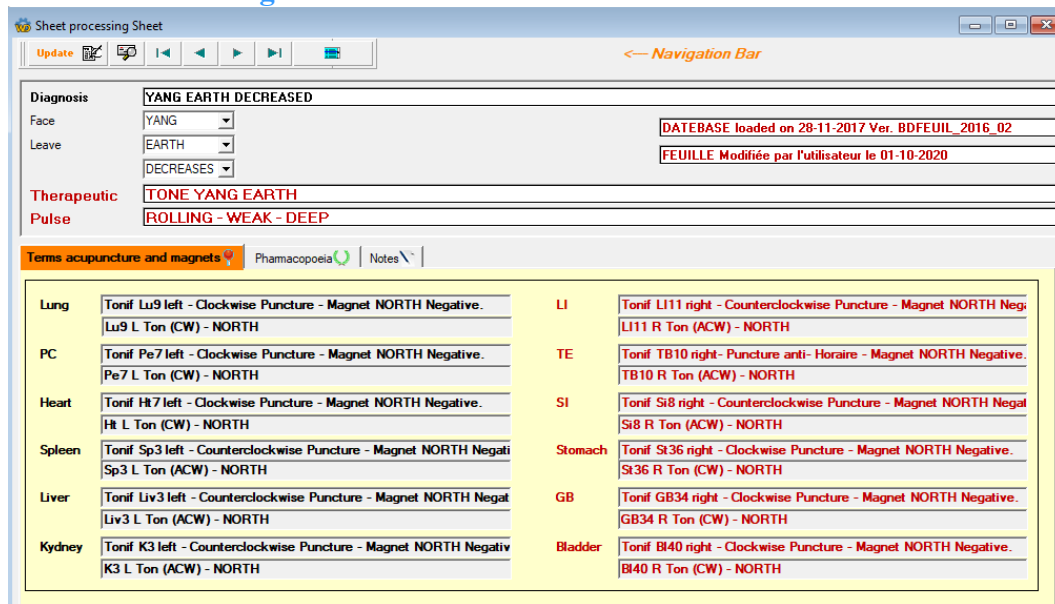


(In the "Signs" file)

Organization of files

The sheets are organized in tab form: in each tab, the associated sections (and possibly the management buttons) appear specifically on each tab, here is an example with the "Roots" sheet:

“Puncture and magnets modalities” tab



Sheet processing Sheet

Update [Navigation Bar]

Diagnosis: **YANG EARTH DECREASED**

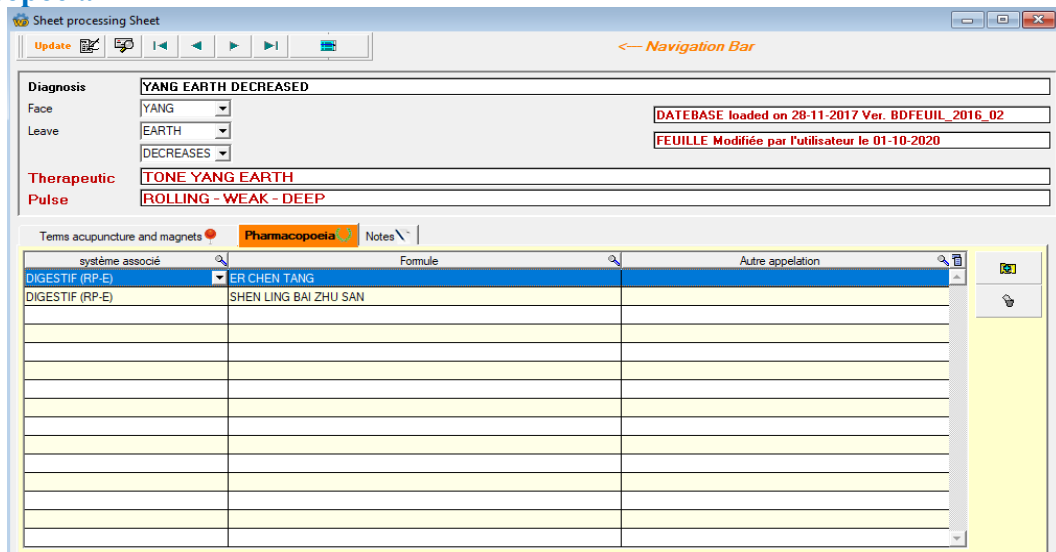
Face: YANG
Leave: EARTH
DECREASES

Therapeutic: **TONE YANG EARTH**
Pulse: **ROLLING - WEAK - DEEP**

Terms acupuncture and magnets

Lung	Tonif Lu9 left - Clockwise Puncture - Magnet NORTH Negative. Lu9 L Ton (CW) - NORTH	LI	Tonif LI11 right - Counterclockwise Puncture - Magnet NORTH Neg. LI11 R Ton (ACW) - NORTH
PC	Tonif Pe7 left - Clockwise Puncture - Magnet NORTH Negative. Pe7 L Ton (CW) - NORTH	TE	Tonif TB10 right - Puncture anti - Horaire - Magnet NORTH Negative. TB10 R Ton (ACW) - NORTH
Heart	Tonif Ht7 left - Clockwise Puncture - Magnet NORTH Negative. Ht L Ton (CW) - NORTH	SI	Tonif Si8 right - Counterclockwise Puncture - Magnet NORTH Negat. Si8 R Ton (ACW) - NORTH
Spleen	Tonif Sp3 left - Counterclockwise Puncture - Magnet NORTH Negati. Sp3 L Ton (ACW) - NORTH	Stomach	Tonif St36 right - Clockwise Puncture - Magnet NORTH Negative. St36 R Ton (CW) - NORTH
Liver	Tonif Liv3 left - Counterclockwise Puncture - Magnet NORTH Negat. Liv3 L Ton (ACW) - NORTH	GB	Tonif GB34 right - Clockwise Puncture - Magnet NORTH Negative. GB34 R Ton (CW) - NORTH
Kydney	Tonif K3 left - Counterclockwise Puncture - Magnet NORTH Negativ. K3 L Ton (ACW) - NORTH	Bladder	Tonif Bl40 right - Clockwise Puncture - Magnet NORTH Negative. Bl40 R Ton (CW) - NORTH

« Pharmacopoeia » tab



Sheet processing Sheet

Update [Navigation Bar]

Diagnosis: **YANG EARTH DECREASED**

Face: YANG
Leave: EARTH
DECREASES

Therapeutic: **TONE YANG EARTH**
Pulse: **ROLLING - WEAK - DEEP**

Terms acupuncture and magnets

Pharmacopoeia

systeme associé	Formule	Autre appellation
DIGESTIF (RP-E)	ER CHEN TANG	
DIGESTIF (RP-E)	SHEN LING BAI ZHU SAN	

How do you organize yourself to make the best use of the software?

Here are some organizational and scheduling suggestions to get the most from your software.

In the first place

- In principle, you don't need to go to the Roots and Leaves cards because these files have a limited number of records and do not require any additions (But you can take a look!)
- First of all, familiarize yourself with the signs file: consult the file (navigation bar), add your own signs if necessary, display the different lists:



General list of signs



List of Root signs



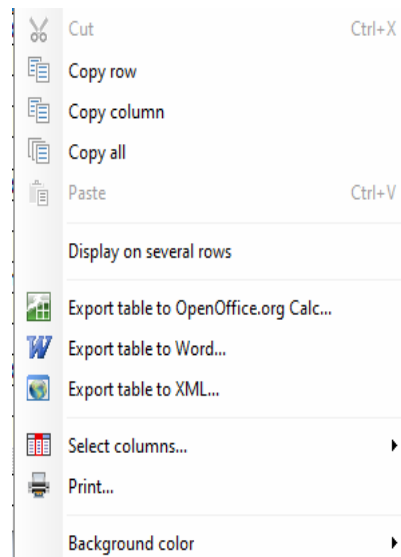
Synthetic list (useful for printing on paper)

List of signs

Right-click in the list to print or export it - Double click to select a line

Sign code	Titre bis	WOOD Status	System	FIRE Status	System	EARTH Status	MEI Status
Abdominal cramps	Crampes abdominales	INCREASED	DIGESTIF (Sp-St)				
Abdominal pain	Douleur abdominale			INCREASED	DIGESTIF (Sp-St)		
Abortion (miscarriage)	Avortement (plutôt fausse couche)	DECREASED	URO-GENITAL (K-BI)				
Abundant urine	Urines abondantes					INCREASED	
Activity decreased	Activité diminuée	DECREASED	ARTICULO-MUSCLE (Lv-G)				
Activity increased	Activité augmentée	INCREASED	ARTICULO-MUSCLE (Lv-G)				
Acute pulmonary edema	OAP					DECREASED	
Aggravated pain on motion	Douleur aggravée au mouvement						
Agitation	Agitation	INCREASED	CENTRAL NERVOUS (Ht-S)				
Albuminuria	Albuminurie			INCREASED	URO-GENITAL (K-BI)		
Anémia (Hemoglobin-Iron-Vitamins)	Anémie Hb-Fe-Vit					DECREASED	
Anemia (red blood cells)	Anémie GR-GB			DECREASED	URO-GENITAL (K-BI)		
Angina	Angine			INCREASED	RESPIRATORY (Lu-L)		
Angor	Angine de poitrine	INCREASED	CENTRAL NERVOUS (Ht-S)				
Anhidrosis	Anhydrose					DECREASED	
Anuria	Anurie	INCREASED	URO-GENITAL (K-BI)				INCRE
Aphonia	Aphonie	DECREASED	RESPIRATORY (Lu-L)				
Appetite decreased	Appétit diminué						DECR
Appetite increased	Appétit augmenté						INCRE
Arrhythmias	Troubles du rythme	DECREASED	CENTRAL NERVOUS (Ht-S)				
Arthritis	Arthrite			INCREASED	ARTICULO-MUSCLE (Lv-GB)		
Arthrosis	Arthrose						
344							

N.B. : Dans les listes, un clic droit de la souris vous permet d'accéder à un menu contextuel pour imprimer, exporter, etc. :



The diagnosis

Some examples are delivered with the software: study them to familiarize yourself with different scenarios.

Then, enter your own reports, according to the following sequence:

- Entering general information (balance sheet code, last name, first name, etc.)
- In the “**Entering history and signs**” tab: reason for consultation, addition of signs presented by the patient.
- At the level of the “**EnteringBranch**” tab: specification of meridians, MU point and sensitive BEI SHU points.
- At the level of the « **Résultats et faces** » tab: the scores of the functions and of the roots obtained from entering the signs and displayed. Beside, you indicate the faces, namely pulse and state (see explanations a little below).
- At the level of the «**Diagnosis**» tab: it is in this tab that you can click on the Diagnostic button:

Launch Diagnostics

This as many times as desired after each addition in the previous tabs. This tab thus gives a global view of the balance sheet, with the score of the functions, the pentagramme and the diagnosis.

- The next two tabs (“**Acupuncture**” and “**Pharmacopoeia**”) indicate the treatment in relation to the balance thus calculated.
- The last “**Additional Notes**” tab allows you to enter your own observations, remarks or additional comments if necessary.

Details on the faces.

The pulse and the general condition make it possible to distinguish the Yin or Yang aspect of the affected function (the faces). They are to be specified in the majority of cases in the section « **FACES : Every function or FIRE↑(option WATER↓)** ». Example: the signs point to the Decreased Metal function. The faces are "Deep pulse" and "Chronic state", which ultimately gives the balance sheet "Yang Metal decreased. ».

The particular case "Increased Fire and Decreased Water" requires entering the faces in the section « **FACES : WATER↓and FIRE↑** ».

CAUTION: remember to run the diagnostic again modifications of the faces (or signs and branches)!

Launch Diagnostics

near

The settings

Accessible from the icon to the right of the main menu banner:

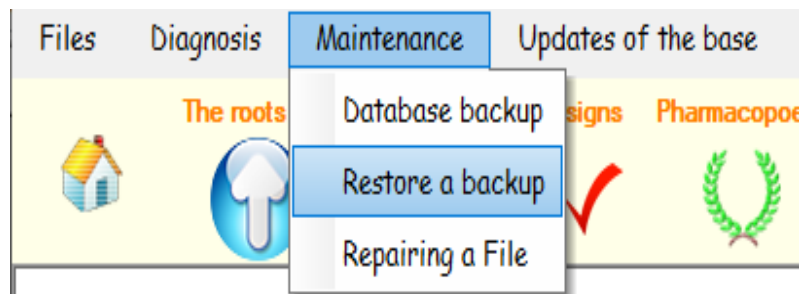


The settings mainly concern the default directories used by the software, and used in particular by the Backup and Restore tool, and the import tools (tools explained below). You can of course modify these default directories, remembering to validate your modifications via the "Save" button:

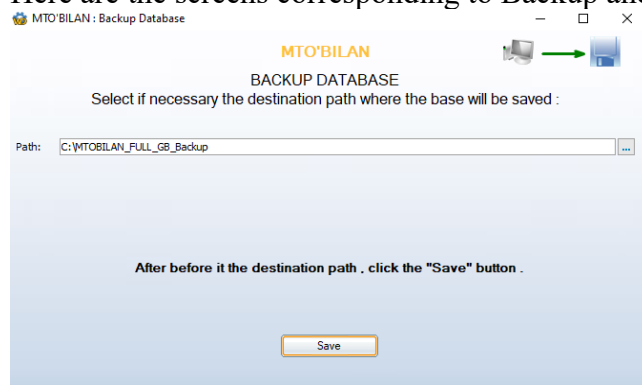


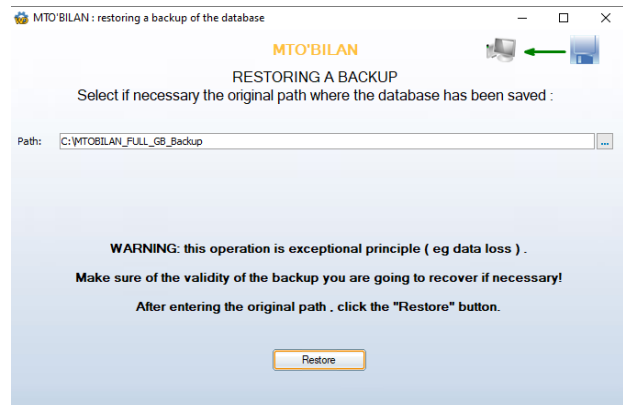
Database Backup and Restore

We strongly recommend that you back up your data regularly, so that you can restore it in the event of loss due to a problem with your computer. This module is accessible via the drop-down menu:

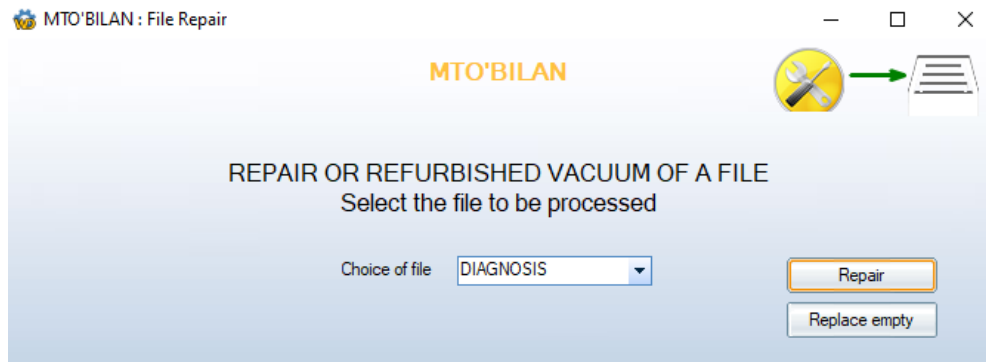


Here are the screens corresponding to Backup and Restore, with the default directory:



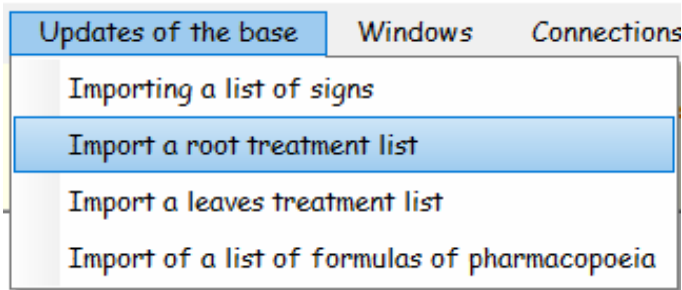


You can of course change the backup or restore path before starting the operation. The "Repair of a file" item is used to recover a damaged file (SIGNS or BALANCE SHEETS "or to empty it if necessary:

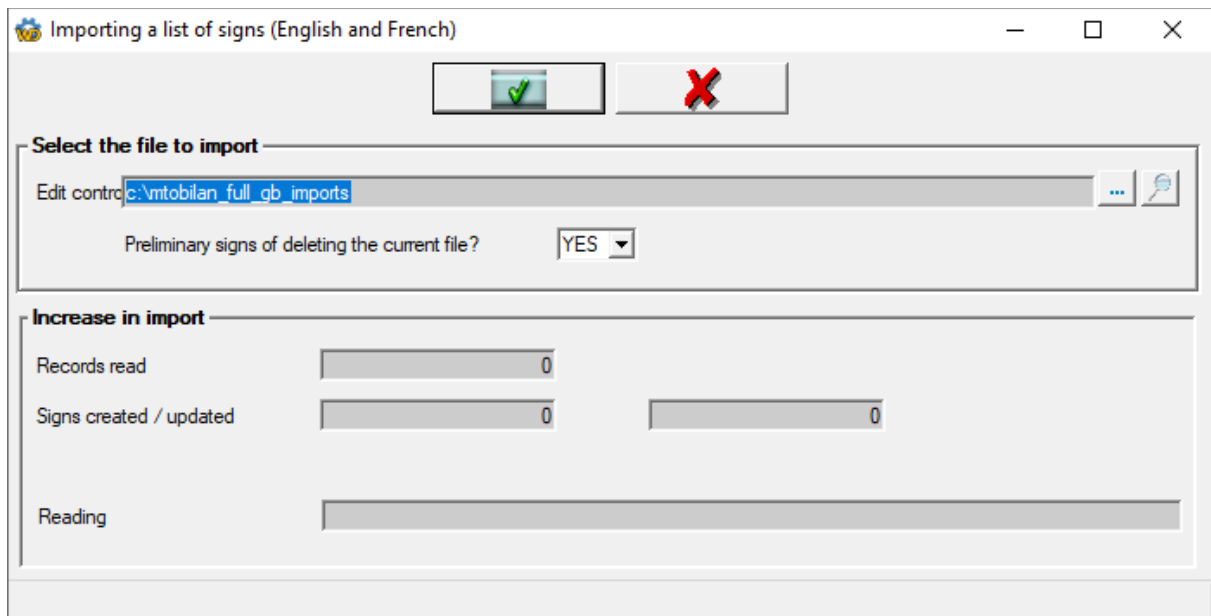


Imports

This module is used to initialize (in the event of a corrupted file) or update the SIGNS, ROOTS, SHEETS or PHARMACOPEEE files. This functionality is in principle dictated by an evolution of the database, on our advice.

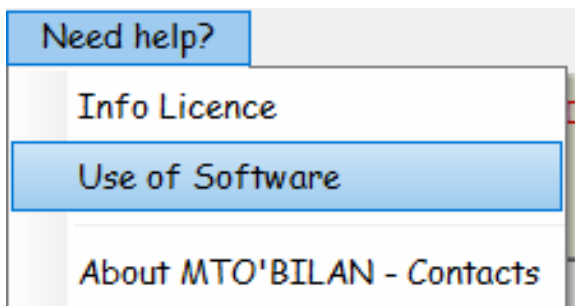


Example with the import of signs:



Need help ?

This functionality is accessible from the main drop-down menu of the software:



GOOD USE!